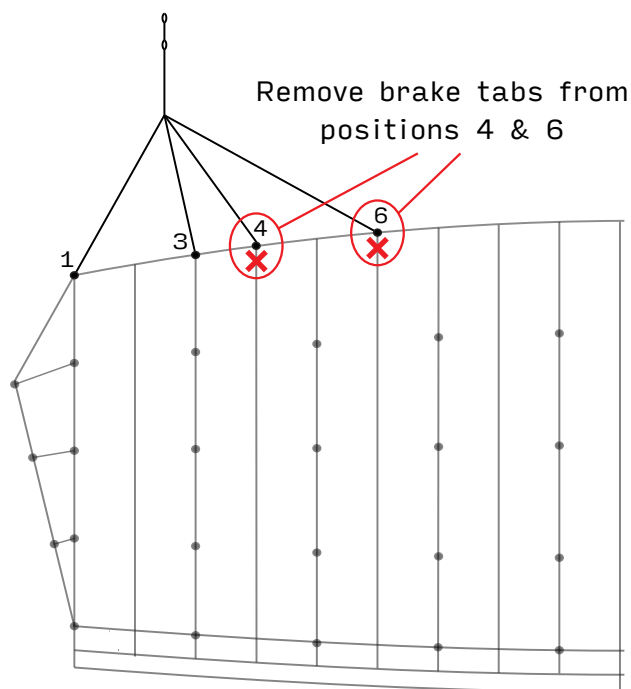
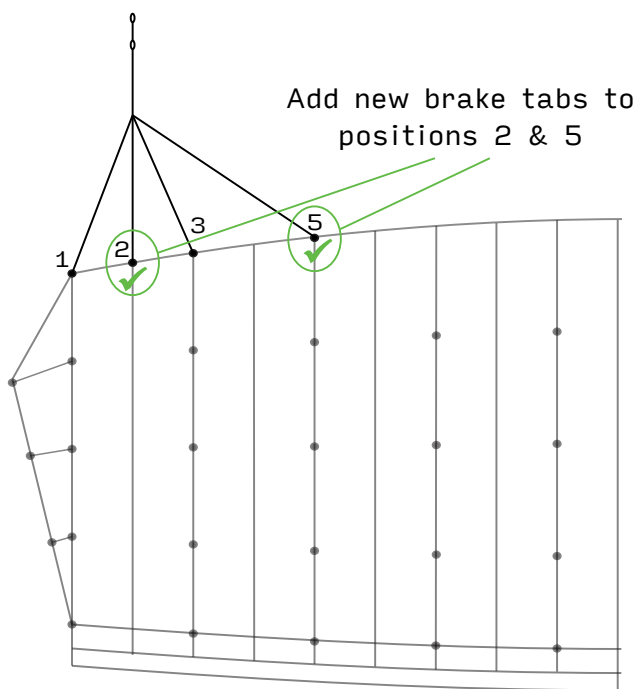


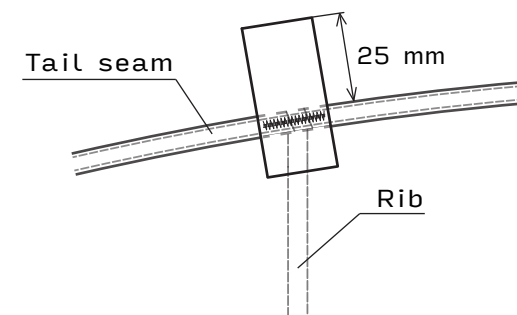
EXISTING BRAKE TABS CONFIGURATION



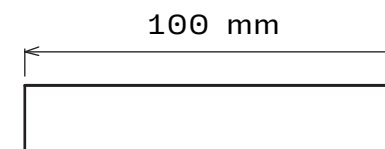
NEW BRAKE TABS CONFIGURATION



INSTALLATION SPECIFICATIONS



BRAKE TAB: Type III, 3/4", NAT, MIL-T-5038



BARTACK: 42 stitches, centre start and stop



THREAD: Tkt 60 (tex 45), Silver, bonded continuous filament nylon 6.6

This modification applies specifically to Safire 3 canopies up to size 169, designed by NZ Aerosports Ltd and manufactured between February 2016 and February 2018. To ensure your canopy is on the current configuration, check the following:

- Brake tabs are installed at the 1-2-3-5 positions.
- Canopy has been relined with the latest lineset, this can be verified by checking if the A1 and A2 lines are the same length.

If either check fails, the canopy should be grounded until the canopy has been updated to the current configuration with the help of your local rigger or JYRO.

You can request a free modification kit from the JYRO Sales team. This includes the current lineset and extra brake tabs. The modification entails removing brake tabs at positions 4 & 6, and installing new tabs at positions 2 & 5. The canopy should be relined with the current lineset. The old lineset must be disposed of.

NOTE: Brake tab positions are numbered along each rib, starting with the outside corners of the tail as position 1.



SAFIRE 3 MODIFICATION GUIDE

BRAKE TAB INSTALMENT

REVISION 4, JULY 2025

NZ AEROSPORTS LTD
Level 2, 17 Maurice Road, Penrose
Auckland, 1061, New Zealand
P: +64 9 360 0045 E: info@jyro.com
WWW.JYRO.COM